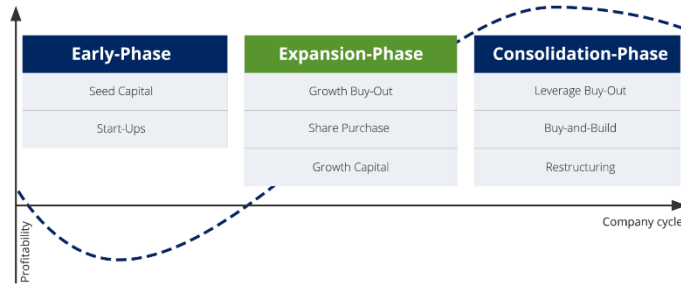


## Our investment focus: expansion



10 75

Revenues of between €10 million and €75 million



Strong growth potential

5-50

Equity investments ranging from €5 million to €50 million

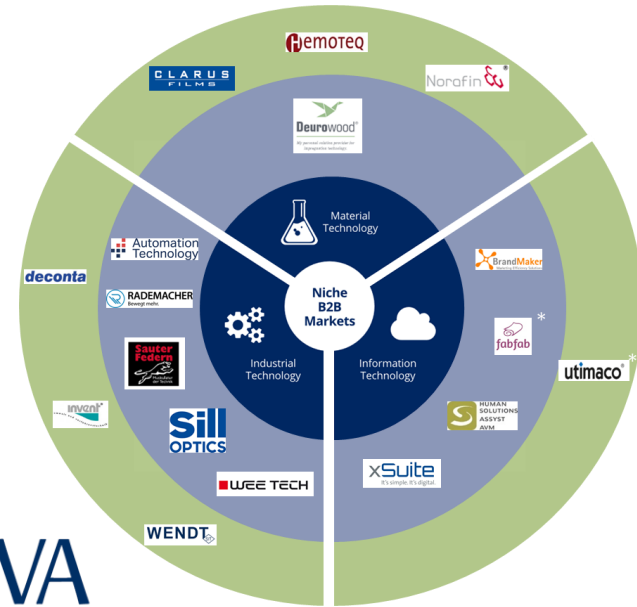


Headquartered in the German-speaking countries



**PINOVA**  
CAPITAL

## Our core competence: technology-driven B2B



## Our strength: flexible equity solutions

Corporate spin-out

Acquisition of corporate business units

Succession

Acquisition of shares due to succession

Majority

Minority placement

Purchase of existing shareholders' equity stakes

Qualified Minorities

Capital increase

Strengthening of equity base to finance growth

## Your contact:



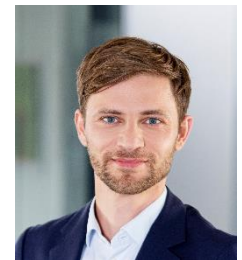
Martin Olbort



Joern Pelzer



Herbert Seggewiß



Jean-Marie Hofbauer

PINOVA Capital GmbH – Viktualienmarkt 8 – 80331 Munich, Germany

T: +49 (0) 89 18 94 254 -40

[www.pinovacapital.com](http://www.pinovacapital.com)